



Reiki eZine by Taggart King

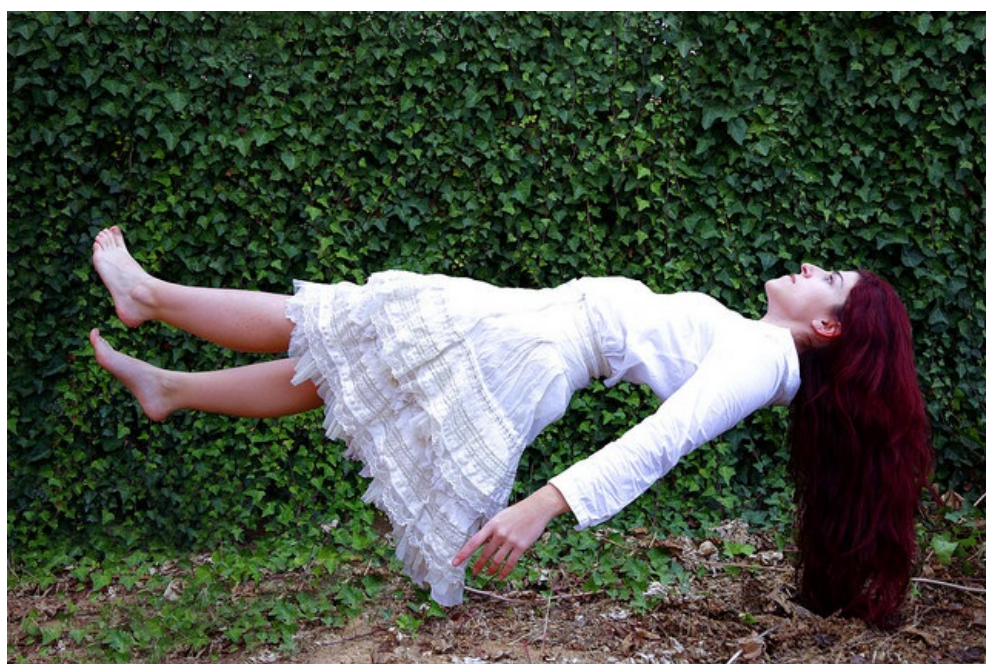
[Liberate Your Reiki!] How Can Reiki Symbols Unlock Such Power?

[\(view all archives\)](#)

Liberate your Reiki!

The eZine for Open-minded Reiki people
20th July 2020

How Can Reiki Symbols Unlock Such Power?



The other day a Reiki person mentioned to me that when people use symbols in Reiki, it just seems ridiculous that they can unlock all this power, and she was a bit embarrassed by it all. It seemed to her to be a bit like “Open Sesame!” or “abracadabra”: just foolish and ridiculous that flailing your fingers in the air could create all this cosmic power.

And it does seem strange, doesn't it? A bit like wizards and incantations and ancient, mysterious, closely-guarded, power-imbued sigils that initiates can use to control and direct natural forces, in our case for good.

So, how can symbols unlock such power?

They can't.

Attunements don't attune

The word “attunement” is a very unfortunate one to use to describe the initiations that Reiki people go through in order to practise Reiki. The word “attune” suggests that you are being attuned to something and, since symbols are involved in most attunement rituals, it is also natural to assume that you are attuned to those symbols and that it is the process of being attuned to a symbol that allows you to do the Reiki thing.

And for a long time in the world of Reiki, where the only way that you could be initiated was by going through an attunement, and basically all attunement rituals involved the use of symbols, it made perfect sense to believe these things.

But here's the thing: Mikao Usui didn't attune anyone to anything. No rituals, no putting a symbol in your aura or your head or your palms, or any of that paraphernalia, and most of his students never even got to see a symbol. And while he would have his students practise initiating others using a ritual, no symbols entered into that process either.

Now, you could take the view of one of the UK's Reiki associations, where their view of Reiki is so narrow that they believe, in effect, that none of Mikao Usui's students were properly initiated by him and so wouldn't qualify for membership of their organisation. I don't think we need to entertain such silliness.

So, where did 'attunements' and the use of symbols within them come from?

Enter the Imperial Officers

By the time that Usui Sensei died, the Imperial Officers – Dr Hayashi and his associates – hadn't trained with him for long enough to have achieved the

sort of level of development where they could have initiated people using intent only.

They had already been taught a variant of Usui's system that used symbols (because they had approached Usui wanting to be taught a hands-on healing system to use in the Japanese military, whereas Usui was teaching a spiritual/self-development system to the other students) and after Usui's death they created an initiation ritual that gave them the same sort of energetic experience that they noticed when they were 'empowered' by Usui.

That constructed ritual used the symbols that they had been taught by Usui, symbols that represented earth ki, heavenly ki and a state of oneness. So Reiki attunements started with, and were invented by, the Imperial Officers.

That ritual passed via Dr Hayashi (who may have altered it) to Mrs Takata, she passed it on to her students, and then the ritual has mutated and altered endlessly as it has been passed from one teacher to another in different lineages, with bits added, bits taken away and parts embellished or simplified. I have seen no mention of Mrs Takata talking about a person having to be 'attuned' to a symbol as part of the initiation, nor that one needed to have been attuned to a symbol for it to work for you.

But in any case, from Japan about 20 years ago came details of a ritual that Usui had his trainee Masters use to initiate people into the system. It's called Reiju, it doesn't use any symbols, and when that ritual has been used then the recipient can use the Reiki symbols - or any other symbol - to direct and focus the energy.

"Attuning" someone to a symbol is not a necessary step in initiating them into Reiki and does not have to be done to enable a Reiki person to use the Reiki symbols.

So, where does the power of the symbols come from?

[Click To Read More](#)

The "Liberate Your Reiki!" eZine is produced by Reiki Evolution www.reiki-evolution.co.uk

Picture credit: [Miriam Espacio](#)